

✦ smart

A Guide to Creative
Colours &
Finishes

We recommend using this guide to request a painted sample from your supplier prior to placing your order

◆ Durable, beautiful and guaranteed to last

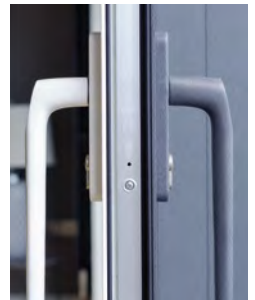
Committed to the highest standards of product quality and workmanship, we undertake a rigorous regime of quality inspections and controls, ensuring our powder coated products comply with all the requirements of the relevant British, European and Qualicoat* standards.

We are proud to back our advanced production processes with the assurance of a **25-Year Paint Guarantee**, which covers the coated aluminium against any of the following faults:

- ◆ *Peeling, powdering and blistering*
- ◆ *Corrosion except due to bending or folding after the application of the paint*
- ◆ *Chalking, fading and loss of sheen out of the Qualicoat* regulation*
- ◆ *Filiform corrosion*



◆ *Request a painted sample of your chosen colour before making your final decision.*



* Marine guarantee applied for separately. Qualicoat is a quality-label organisation established to maintain and promote the quality of coating on aluminium and its alloys.

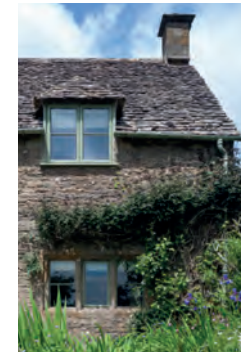
Alchemy

Combines the best of anodised and powder coated finishes



Cotswold

The perfect colour palette for traditional projects and conservation areas



Request a painted sample of your chosen colour before making your final decision.

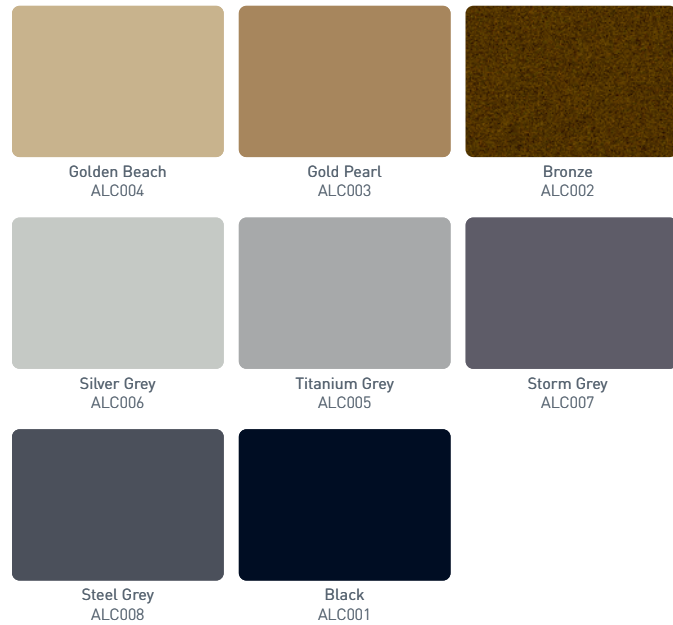


Having selected the finish for your project, simply speak to your supplier and they will arrange for a sample to be sent to you.



Alchemy

Combines the best of anodised and powder coated finishes



Cotswold

The perfect colour palette for traditional projects and conservation areas



Naturals

Inspiring colours and finishes for contemporary architecture and restoration projects



Reassuring quality with a lustrous finish

Our in-house polyester powder coating facilities are the most advanced of their kind in the UK.

This allows us to provide the widest range of high quality standard and non-standard colours and finishes for virtually every requirement. Each finish meets the demanding marine-grade standard*, enabling our systems to be used in even the most challenging environments.

The paint process begins in our pre-treatment area. Alkaline and acid based and 100% chromate free, this stage of finishing ensures the aluminium is perfectly prepared, ready for the polyester powder coating to be evenly and smoothly applied to the surface. The result is a beautiful, durable and low-maintenance finish.

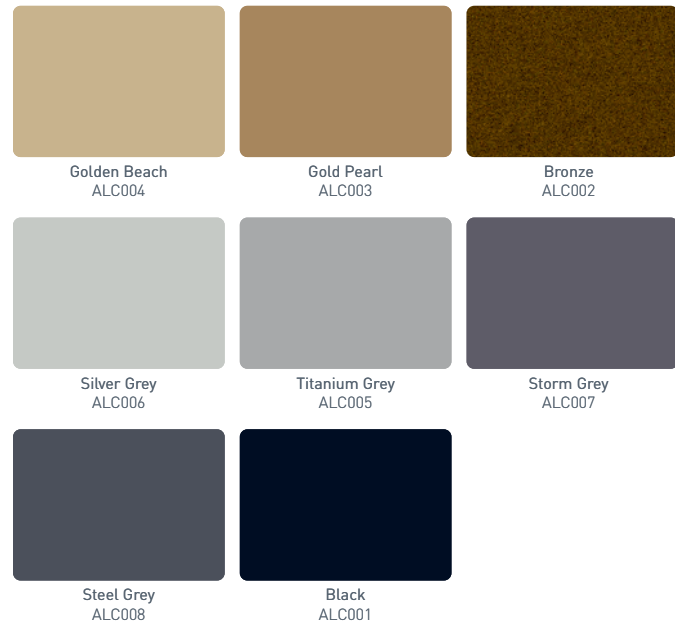
Reflecting our commitment to sustainable manufacture, our finishing plant incorporates a number of environmental features. These include rainwater capture, allowing us to use filtered and cleaned water in the pre-treatment process, and a powder recycling system, which captures and re-uses 98% of all excess powder.

* Marine guarantee applied for separately. Qualicoat is a quality-label organisation established to maintain and promote the quality of coating on aluminium and its alloys.

Having selected the finish for your project, simply speak to your supplier and they will arrange for a sample to be sent to you.

Alchemy

Combines the best of anodised and powder coated finishes



Cotswold

The perfect colour palette for traditional projects and conservation areas



Naturals

Inspiring colours and finishes for contemporary architecture and restoration projects



Sensations

The 'Sensations' colours feature excellent design qualities



Durable, beautiful and guaranteed to last

Committed to the highest standards of product quality and workmanship, we undertake a rigorous regime of quality inspections and controls, ensuring our powder coated products comply with all the requirements of the relevant British, European and Qualicoat® standards.

We are proud to back our advanced production processes with the assurance of a **25-Year Paint Guarantee**, which covers the coated aluminium against any of the following faults:

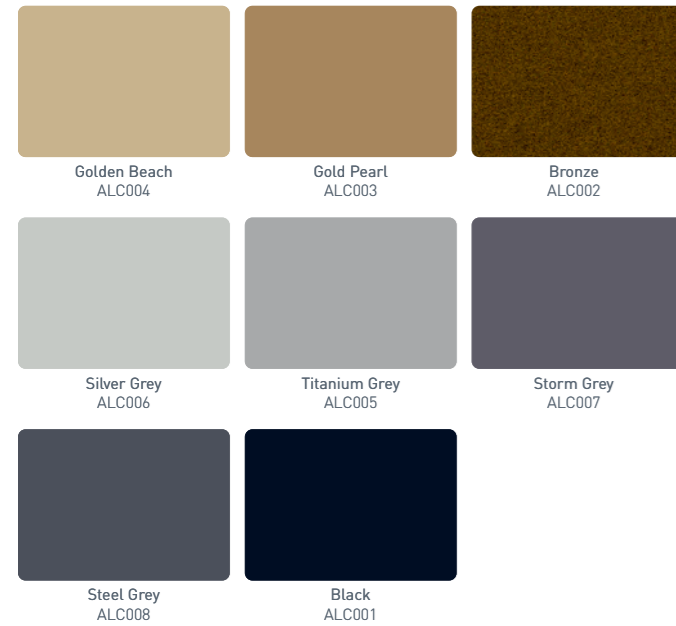
- ◆ *Peeling, powdering and blistering*
- ◆ *Corrosion except due to bending or folding after the application of the paint*
- ◆ *Chalking, fading and loss of sheen out of the Qualicoat® regulation*
- ◆ *Filiform corrosion*

◆ *Having selected the finish for your project, simply speak to your supplier and they will arrange for a sample to be sent to you.*



Alchemy

Combines the best of anodised and powder coated finishes



Cotswold

The perfect colour palette for traditional projects and conservation areas



Naturals

Inspiring colours and finishes for contemporary architecture and restoration projects



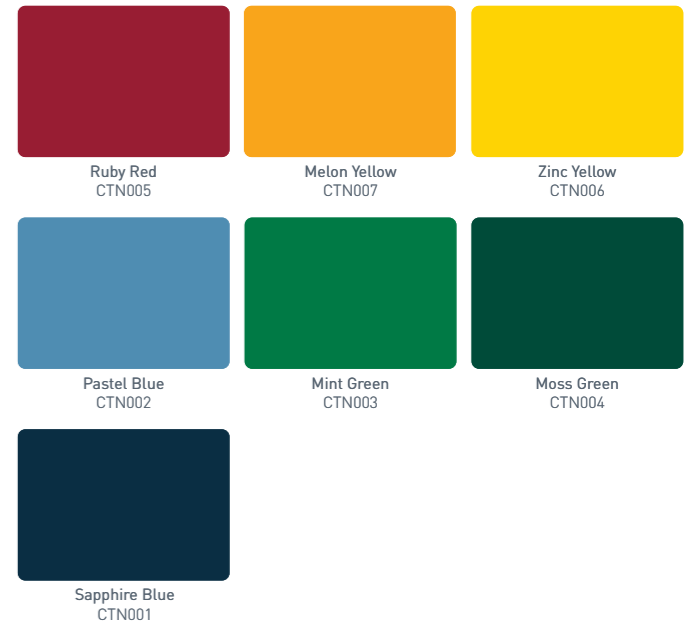
Sensations

The 'Sensations' colours feature excellent design qualities



Creations

The perfect finish for our Designer Door range



✦ *Having selected the finish for your project, simply speak to your supplier and they will arrange for a sample to be sent to you.*

✦ *Our systems have been designed to not only withstand all that the elements can throw at them, but also deliver minimum heat loss and great thermal efficiency.*

✦ *Our unrivalled range of colours are available in a choice of textured and non-textured finishes. All of which are scratch and corrosion resistant.*

Please insert colour sample below



Your Smart colour sample