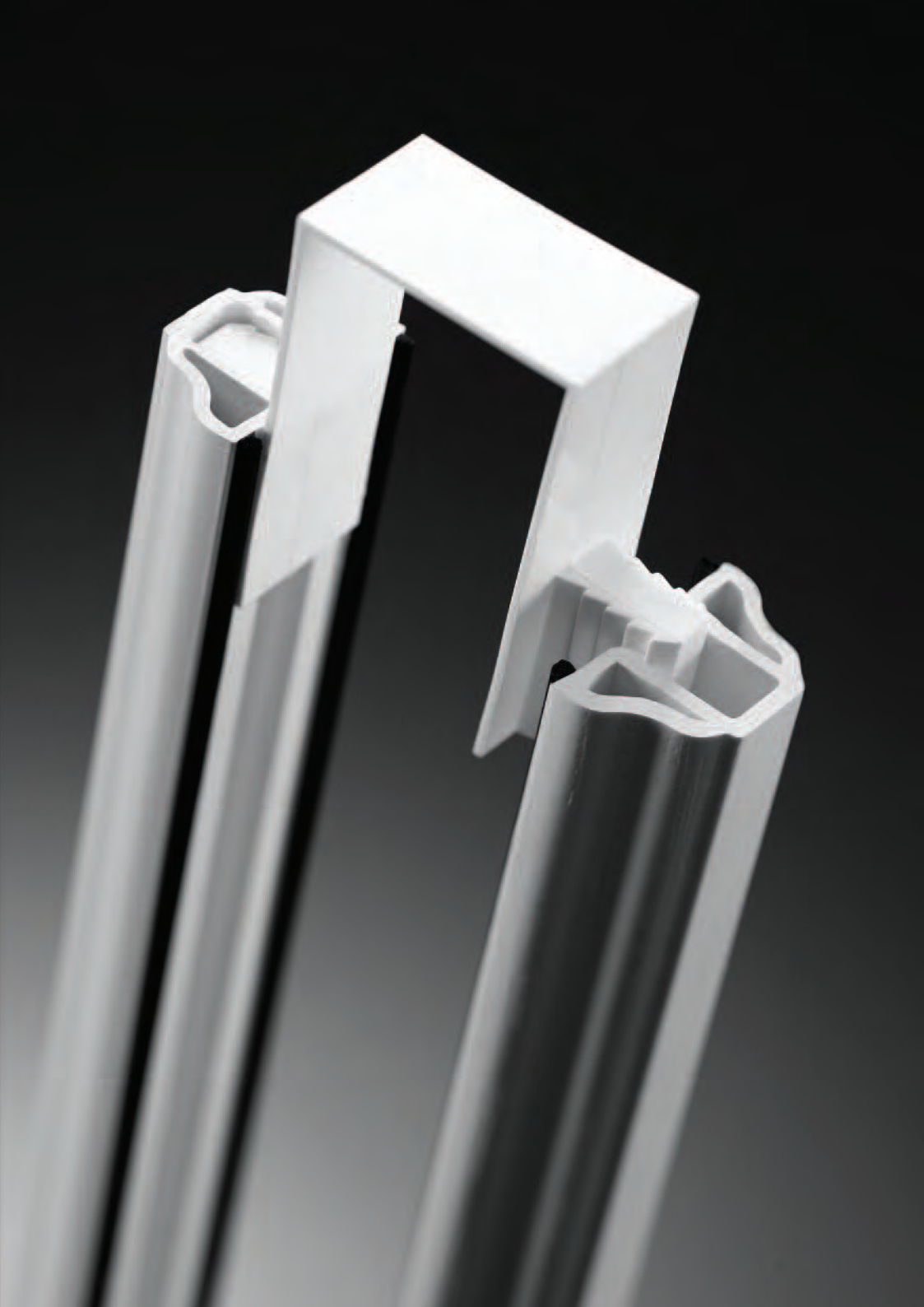




The Georgian Bar Company Ltd

**GEO=FAST**  
Products



Welcome  
to the  
ONLY Snap-On  
Georgian Bar System

**GEO=FAST**



# The **GEO=FAST** System

Geofast from the Georgian Bar Company offers the best solution for decorative astragal bars. Windows are given a traditional Georgian appearance with the innovative patented snap-on technology.


As the market leader, Geofast now offers a range of bars to suit casement, vertical sliding and flush sash windows in a rainbow of colour options. From new build, replacement to heritage and conservation developments, the most efficient, long lasting, effective and stunning look will come from using geofast.



*"The genius of the GeoFast system lies in its simplicity. Fit the bar clip to each side of the sealed unit, install the unit in the frame in the usual way, align the centre clip to the edge clips, position the centre clip using a small piece of double sided tape, cut and mitre the Georgian bars and clip into place. It really is as simple as that."*







VERSATILITY GB2VS BAR  
USING ENDCAPS

# Why use **GEO=FAST**

**Stylish**, effective and authentic looking  
Georgian style double glazed windows

**Quick** and easy to  
fit onto a double  
glazed unit

Can be installed  
**retrospectively**

**Reusable** in the  
event of breakage  
of glazed units

Designed to cope  
with the rigours of  
**onsite installation**

**Removes** the need  
for remedial work

**Fits** casement, flush  
sash, VS and door  
systems

**Easier** to apply than  
adhesive alternatives

**Available** in over  
40 foiled colours

**Market leading**  
product



# The **GEO=FAST** Range

FOR MORE INFORMATION PLEASE  
SEE OUR WEBSITE, WHERE YOU CAN  
USE OUR ONLINE STORE TO  
ORDER THE GEOFAST PRODUCTS.  
[WWW.GEOFAST.CO.UK](http://WWW.GEOFAST.CO.UK)



GB1  
CHAMFERED  
BAR



## Traditional

### GB1 CHAMFERED & GB2 FEATURED BAR

This range of bars offers the most authentic look to a UPVC Window. Using end milling, the bars fit seamlessly to both the frame and to each other. This range offers a robust and ample look to the window. (Bar size 25mm x 16mm)

GB2  
FEATURED  
BAR



GM1  
CHAMFERED  
BAR



## Traditional Plus

### GM1 CHAMFERED & GM2 FEATURED BAR

Designed to use with our existing Traditional and Versatility ranges. Provides an efficient and effective false transom. Perfect for custom doors to create unique designs with no welding. Minimises the need for individual panes of glass - whilst still giving the effect. (Bar size 50mm x 16mm)

GM2  
FEATURED  
BAR





GB1VS  
CHAMFERED  
BAR



GB2VS  
FEATURED

## Versatility

### GB1VS CHAMFERED & GB2VS FEATURED BAR

This range of bars offers the best of both worlds as it will fit casement and vertical sliders alike. With our GB2VS Featured Bar we also have a large range of end caps and cruciforms to ensure if you don't have a milling machine then our bar can still be installed using a simple and very effective system. (Bar size 21mm x 11mm)

**NEW FLUSH FIT  
UNIVERSAL END CAP  
NOW AVAILABLE  
FOR GB2VS**



ULB  
CHAMFERED  
BAR

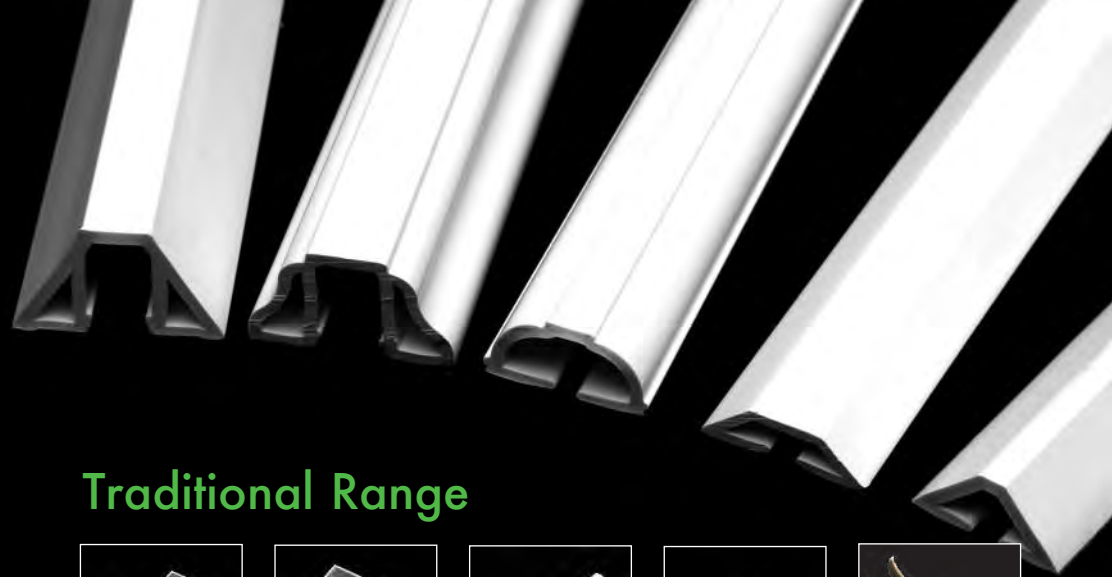
## Simplicity

### ULTRA LOW LEVEL CHAMFERED BAR

This range is the quickest and simplest of our systems. It offers an ultra low level bar that will sit within the frame rebate with a 45 degree mitre cut bar to bar or the use of our cruciform key. (Bar size 21mm x 7mm)



Now available in over 40 colours.



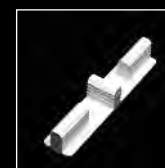
## Traditional Range



GC 24/28 BAR CLIP



SINGLE SIDED  
U CLIP



GCC  
CRUCIFORM CLIP



INTERMEDIATE  
BRIDGING PIECE



CUTTING SNIPS  
(FOR TRADITIONAL  
& VERSATILITY  
RANGE)

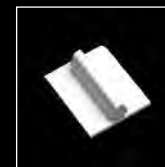
## Versatility Range



UL 24/28 BAR CLIP  
(SINGLE SIDED  
ALSO AVAILABLE)



ULCC  
CRUCIFORM CLIP



UL INTERMEDIATE  
BRIDGING PIECE



CJC2VS  
CRUCIFORM COVER



FEATURED BAR  
END CAP  
(PROFILE RELATED)

## Simplicity Range



UL 24/28 BAR CLIP



ULCC  
CRUCIFORM CLIP



UL INTERMEDIATE  
BRIDGING PIECE



UL CRUCIFORM KEY



ULEC REBATE  
END CAP

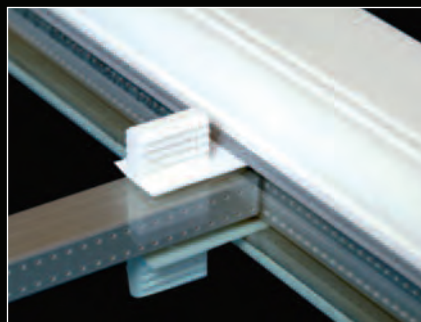
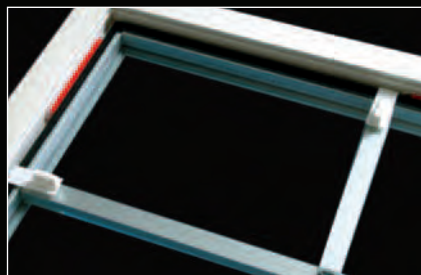


# The **GEO**≡**FAST** Method

Units can have bars applied to either one or both sides of the window as required and the bars will flex with the unit – so that if “toe and heeling” is required this will not impact on the effectiveness of the bars. If, however, reglazing is required, then the bars can be easily removed and reapplied on site.

- The components comprise edge clips, centre clips and the Georgian Bars. (Optional end caps and cruciform cover\*)
- Place the edge clips in the required positions around the sealed glazing units.
- Glaze window as per manufacturing any glazing instructions. Ensure that clips have retained their position prior to final beading.
- Using an alcohol wipe ensure that all surfaces are clean, dry and free of grease.
- Accurately align the centre clip to the edge clips, place a 40mm length of double sided tape to the underside of the centre clip and fix in place.
- For spans over 300mm between clips an intermediate bridging piece should be used to increase rigidity.
- Precisely cut and mill/mitre the full length bar. This should always be the shortest span for maximum rigidity. (Optional end cap installation\*)
- Cut and mill/mitre the remaining bars and complete installation. (Optional cruciform cover before snapping into place\*)

**\*For use with GB2VS and Ultra Low Bar**

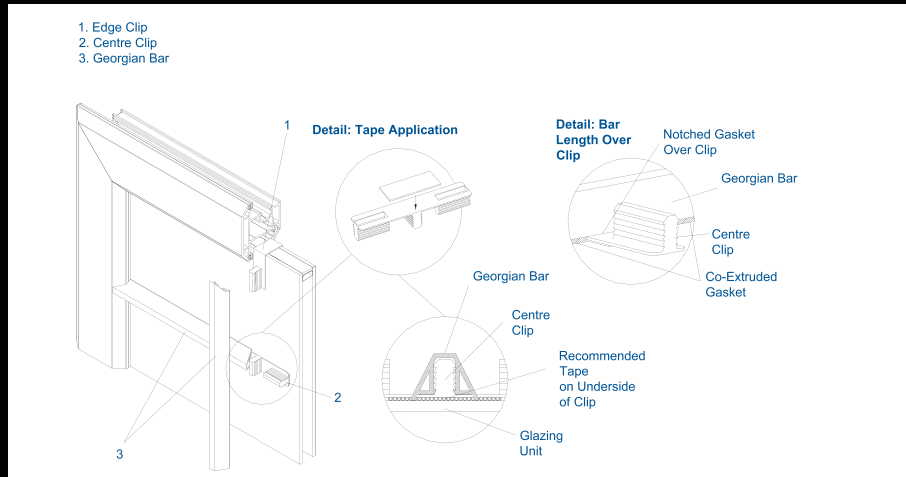


TRADITIONAL  
GB2 BAR MILLED

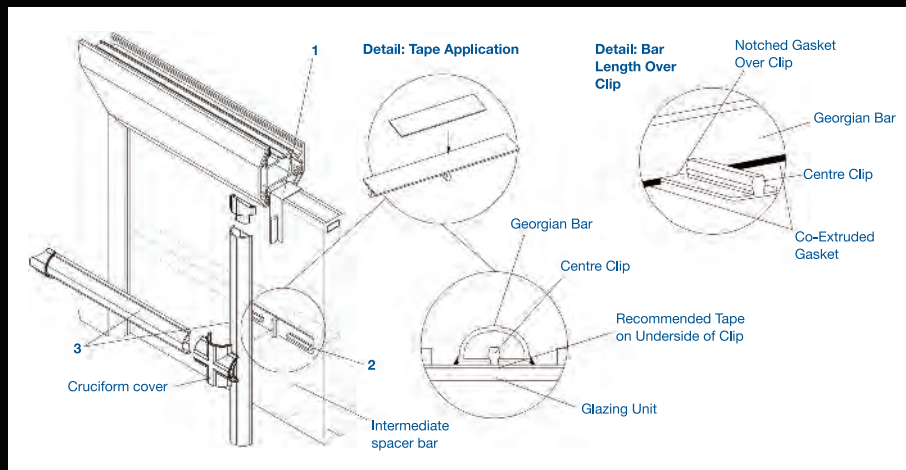


# GEOFAST - How it works

## Geofast using a milling machine



## Geofast using end caps



VERSATILITY GB2VS BAR  
USED WITH  
TRADITIONAL PLUS GM2 BAR





# GEO=FAST

For more information please visit  
**[www.geofast.co.uk](http://www.geofast.co.uk)**

Get social with us!

 Like us on  
Facebook  
@georgianbarcompany

 **twitter**  
@geofastsystem

**The Georgian Bar Company Limited**

Unit 1, Clifton Business Park,  
Preston New Road, West Preston. PR4 0XQ

**Tel: 01772 631441 | Fax: 01772 679886**

Email: [sales@geofast.co.uk](mailto:sales@geofast.co.uk) | [www.geofast.co.uk](http://www.geofast.co.uk)